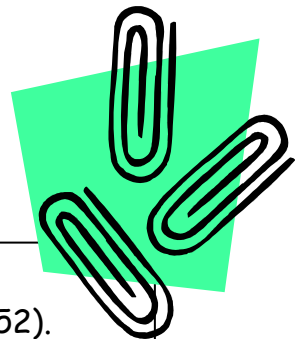


Name: _____ **And You Think You Have Significant Problems?**
 Date: _____ **Significant Figure Rules & Practice**
 Period: _____



Important Ideas

- Measurements (3.25 cm) are different than numbers (3.14159252).
- Measurements consist of a number and units.
- Measurements are an action by someone with a measuring instrument.
- Measurements have built-in uncertainty; no measurement is exact.

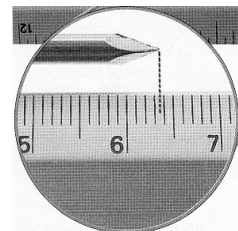
PAPER CLIP:

1. Estimate the length of your paperclip using each of the rulers given below...

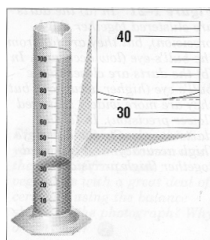
	length of paper clip _____ cm
	length of paper clip _____ cm
	length of paper clip _____ cm

LENGTH:

1. In the picture at right, the scale on the ruler reads to the nearest _____. This means that we can reasonably estimate to the _____ place. Therefore, we might say that the length of this nail is _____.



VOLUME:



2. In the picture at left, the scale on the graduated cylinder reads to the nearest _____. This means that we can reasonably estimate to the _____ place. Therefore, we might say that the volume of water shown here is _____.

Significant Figure Rules

1. Numbers other than _____ are _____ significant!
2. Zeros _____ significant figures are _____ significant!
3. Any _____ zero used _____ the decimal point is significant!
4. Zeros used solely as _____ (for the decimal point) are **NOT** significant!
5. When we **ADD/SUBTRACT**, your answer is rounded to the smallest _____.
6. When we **MULTIPLY/DIVIDE**, your answer is rounded to the fewer number of _____.

I. Determine the number of significant figures in each measurement.

- 1.) 6.751 g 4.) 2500 m 7.) 0.106 cm 10.) 26.509 g 13.) 2.690 g
2.) 0.157 kg 5.) 700. g 8.) 0.0067 g 11.) 54.52 cm³ 14.) 43.07 cm
3.) 28.0 nm 6.) 30.07 g 9.) 0.0230 cm 12.) 0.1209 m 15.) 635200l g

II. Add/Subtract the following, and write your answer with the correct number of significant figures. DON'T FORGET ABOUT UNITS!!!!

RULE: When we add/subtract, your answer is rounded to smallest _____ place.

- 16.) 16.5 cm + 8 cm + 4.37 cm 20.) 23.27 km - 12.058 km
17.) 13.25 g + 10.00 g + 9.6 g 21.) 13.57 g - 6.3 g
18.) 2.36 m + 3.38 m + 0.355 m + 1.06 m 22.) 350.0 m - 200 m
19.) 0.0853 g + 0.0547 g + 0.037 g + 0.00387 g 23.) 27.68 cm - 14.369 cm

III. Multiply/Divide the following, and write your answer with the correct number of significant figures. PLEASE BE CAREFUL ABOUT YOUR UNITS!!!

RULE: When we multiply/divide, your answer is rounded to the fewer # of _____.

- 24.) 2.6 cm × 3.78 cm 28.) 35 cm² ÷ 0.62 cm
25.) 6.54 m × 0.37 m 29.) 39 g ÷ 24.2 g
26.) 0.036 m × 0.0002 m 30.) 0.58 dm³ ÷ 2.15 dm
27.) 3.08 km × 5.2 km 31.) 40.8 m² ÷ 5.050 m